



KANSAS GEOLOGICAL SOCIETY

BULLETIN

Volume 97 Number 1

January - February 2022

Established 1925

IN THIS ISSUE

Memorial for A. Scott Ritchie	page 10
Memorial for James R. "Jim" Daniels	page 11
Meet the 2022 KGS Board of Directors	page 14
Memorial for James "Jim" Iniguez	page 15
Memorial for Lee Poulsen	page 15



Your 1/8 page ad here

**Use Your KGS Library
For All Your Printing Needs**

Old photos?
Old documents?

We can scan them for you!

Robert F. Walters Digital Library

The most complete source for Kansas data

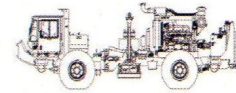
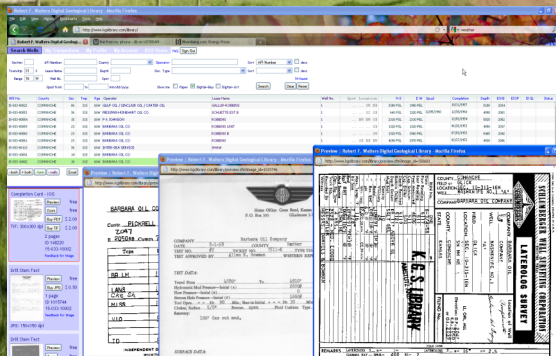
Database updated nightly

Day or Night

You can get to the data as you need it

www.kgslibrary.com

To Join: call 316-265-8676



**Proudly Celebrating 25+ Years
Acquiring Seismic Data Throughout the
Continental United States**

WICHITA

Nicolle Jausel
(316) 636-5552

Nicolle@parangoneo.com

DENVER

Kim Nordberg
(303) 888-8885

Knordberg@parangoneo.com

HOUSTON

Brent Propst
(832) 643-5158

Bpropst@parangoneo.com

OKLAHOMA CITY

Joe Broussard
(405) 213-9859

Jbroussard@parangoneo.com

website: www.parangoneo.com

We Invite You

To join the

***Kansas Geological
Foundation***

*\$50.00 membership is
tax deductible*

Call 316-265-8676

Or send checks to:

Kansas Geological Foundation

212 N. Market, Ste. 100

Wichita, KS 67202

Table of Contents

Features: Meet the 2022 KGS Board **page 14**
KGS Events: No events are scheduled

Departments & Columns:

KGS Tech Talks	4
President's Letter	7
Advertiser's Directory	8
In Memoriam	16
Professional Directory	17
Kansas Geological Foundation Cornerstone and KGF News	19-21
Kansas Geological Foundation Memorials	22-24
Exploration Highlights	26-27

ON THE COVER:

Desert Spring Along Fault, Death Valley

Photo by Marli Miller

CALL FOR PAPERS

The Kansas Geological Society Bulletin, which is published bimonthly in electronic format, seeks short papers dealing with any aspect of Kansas geology, including petroleum geology, studies of producing oil or gas fields, and outcrop or conceptual studies. Maximum length of papers is 6 pages as they appear in the Bulletin, including text, references, figures and/or tables, and figure/table captions. Inquiries regarding manuscripts should be sent to manager@kgslibrary.com or mailed to 212 N. Market, Ste. 100, Wichita, KS 67202. Specific guidelines for manuscript submission appear in each issue of the Bulletin, which can also be accessed on-line at the Kansas Geological Society web site at <http://www.kgslibrary.com>

SOCIETY Technical Meetings

All Technical Meetings will be on Zoom

January 13, 2022	Dr. Karin Goldberg, KSU, SIPES, KGS
January 26, 2022	Dr. Franek Hasiuk, KU Petroleum Geology Student Presentations
February 9, 2022	Brian Wilhite, <i>“New Interpretations of the Stratigraphy and Sedimentology of Siluro-Devonian Rocks in Exposures Along the Western Margin of the Illinois Basin”</i>
February 23, 2022	Mac McGivery, Univ. of Arkansas, <i>“The Tectono-Stratigraphy and Basin Fill Architecture of the Atoka-Desmoinesian, Arkansas-Arkoma Basin”</i>
March 9, 2022	Robert Davis, Schlumberger retired, <i>“Early Development of a Novel Formation Imaging Tool for Cased Hole Wells”</i>
March 23, 2022	Dr. Camelia Knapp, OSU, <i>“Gas Hydrates in the Gulf of Mexico”</i>

Please remember to check the website for the most up to date information on Technical Talks

Tech Talks are held at Landmark Square

212 N. Market—4th floor

In the Center



Wisdom

Note: For those geologists who need 30 professional development hours (pdh) to renew their licenses, there will be a sign-in sheet at each presentation and also a certificate of attendance.

KANSAS GEOLOGICAL SOCIETY



BOARD OF DIRECTORS

PRESIDENT

Roger Martin

SECRETARY

Sal Mazzullo

DIRECTORS

Brian Fisher
Seth Evenson
Doug Louis

PRESIDENT-ELECT

Preston Doll

TREASURER

Garet Dinkel

ADVISORS

Tyler Sanders
Kent Crisler
Kerry Parham

COMMITTEE CHAIRMEN

Advertising

Kent Scribner

Advisory

Annual Banquet

Doug Davis

Bulletin

Wesley Hansen

Continuing Education

Distinguished Awards

Wesley Hansen

Environmental

Kent Matson

Field Trip

Jerry Honas

Fishing Tournament

Future Plans

Tyler Sanders

Golf

Kevin Davis

New Building

Tyler Sanders

Historian

Larry Skelton

Library

Ted Jochems

Membership

Larry Friend

Nomenclature

John H. Morrison, III

Picnic

Beth Isern

Public Relations

Shooting Tournament

Technical Programs

Doug Davis

Technical Committee

Ryan Dixon

Finance Committee

Tim Hellman, Chairman

Members: Rocky Milford, Chuck Brewer, David Doyel, and Tom Funk

A.A.P.G. DELEGATES

Douglas Davis
2021

Wesley Hansen
2021

BULLETIN STAFF

EDITOR

Wes Hansen (316) 772-6188

ADVERTISING

Kent Scribner (316) 640-1154

MEMORIALS

Wesley Hansen (316) 772-6188

EXPLORATION HIGHLIGHTS

John H. Morrison, III
Independent O&G (316) 263-8281

STATE SURVEY

KS Geological Survey (785) 864-3965

SOCIETY NEWS

KGS Library (316) 265-8676

MANAGER

Rhonda Wisely (316) 265-8676

K.G.S. LIBRARY

PHONE 316-265-8676 FAX 316-265-1013

email: frontdesk@kgslibrary.com or

Web: www.kgslibrary.com

The KGS *Bulletin* is published bi-monthly by the Kansas Geological Society, with offices at 212 North Market, Wichita, Kansas 67202 Copyright 2021. The Kansas Geological Society. The purpose of the *Bulletin* is to keep members informed of the activities of the Society and to encourage the exchange and dissemination of technical information related to the Geological profession. Subscription to the *Bulletin* is by membership in the Kansas Geological Society. Limited permission is hereby given by the KGS to photocopy any material appearing in the KGS *BULLETIN* for the non-commercial purpose of scientific or educational advancement. The KGS, a scientific society, neither adopts nor supports positions of advocacy, we provide this and other forums for the presentation of diverse opinions and positions. Opinions presented in these publications do not reflect official



Nine Trucks Serving

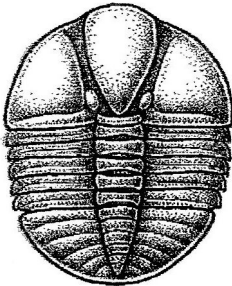
Kansas--Colorado--Texas--Nebraska--Illinois

DST's

Back Pressure testing (G1 7 G2)

Slick line services using the same Weatherford

Electronic Pressure Gauges used on DST's



1-800-728-5369

FAX 1-785-625-5620

www.trilobitetesting.com

trilobite@eaglecom.net

SHOPS LOCATED IN:

Hays, KS

Scott City, KS

Pratt, KS

Oberlin, KS

CAN YOU NAME THE CRITTER?

Sponsored by Trilobite Testing, Inc.

Is your paleo up to date?

If you know the name of the trilobite,
submit your guess via e-mail to
manager@kgslibrary.com

Remember that *Trilobite Testing* is
sponsoring your efforts, so be sure to thank
Paul Simpson the next time you see him.

**Bulletin committee members and PhD's in
Paleontology are prohibited from entering.**



Kansas Geological Society (KGS) Medallion for Scientific Distinction and Excellence

The Kansas Geological Society (KGS) Medallion for Scientific Distinction and Excellence may be given annually for peer-recognized, sustained significant scientific contributions to all facets of applied Kansas geology, including work either in Kansas or in surrounding states if the latter contributions pertain directly and significantly to Kansas geology. No more than one award may be given each year, an award does not have to be given every year, and members of the KGS Awards Committee that handle nominations for this award cannot nominate themselves for this award. The candidates need not be active KGS members, and they must be living at the time of selection. The primary consideration in the selection of a candidate shall be his or her sustained, published, significant contributions to any facet of Kansas geology. Contributions may be varied in form such as development of geologic concepts, advancement in discovery thinking, and recognized leadership in exploration concepts. Oral and/or written publications in peer-reviewed geological venues is a requisite criterion for any candidate for this award. The name of a candidate shall be presented by the Awards Committee to the KGS Board of Directors for their approval. Once approved, the recipient shall be presented an appropriate award in the form of a medallion or plaque recommended by the Awards Committee and approved by the Board of Directors at the annual business meeting of the society. This is a new award given by the KGS for distinction and achievement in Geological research in Kansas.

Awards Committee members are Sal Mazzullo, Mike Dealy and Alfred James.

President's Letter

Roger has been very busy in the field. When any letter from him is available, the bulletin will be re-posted to our website.



AAPG ACE and Section Meeting

Updates For 2022

2022 Image August 28-September 2, 2022

Houston, TX

Mid-Continent Biennial Field Conference

Postponed until Fall of 2022 Rolla, MO

ADVERTISER'S DIRECTORY

	<i>page</i>
Duke Drilling	25
Kansas Geological Foundation	18
Murfin Drilling Company, Inc	25
PARAGON Geophysical Services, Inc	2
Professional Directory	17
Trilobite Testing	6
Walters Digital Library	2

Log in to

Walters Digital Library At

www.kgslibrary.com

Log in as our guest

and see the Society's Database

A convenient way to see what you might want to order!

Call or email your order to:

316-265-8676

frontdesk@kgslibrary.com

ADVERTISER'S RATES: 2022

Full Page	B&W	Color
6 issues	\$2,000	\$2,500
3 issues	\$1,080	\$1,325
1 issue	\$480	\$525
1/2 Page		
6 issues	\$1,000	\$1,500
3 issues	\$540	\$825
1 issue	\$225	\$350
1/4 Page		
6 issues	\$600	\$900
3 issues	\$325	\$525
1 issue	\$150	\$250
1/8 Page		
6 issues	\$300	\$500
3 issues	\$175	\$325
1 issue	\$75	\$185
Professional Ad (Business Card)		
6 issues	\$90	\$180

Notice

By a Board vote in December in 2021, it was decided to publish the KGS Bulletin only as an online publication.

This was done as a cost reduction to the KGS bottom line.

Robert F. Walters Digital Library

Log in as our Guest

username: guest

password: guest

316-265-8676



Let Us Print Your Geo Reports
And Save Your Time For Finding More Oil & Gas

Top Quality Color Printing For Our Membership

Email your files to: kgsorders@gmail.com

The Kansas Geological Society & Library

Memorial

A. Scott Ritchie

A. Scott Ritchie, 89, loving husband, father, grandfather, and friend, died December 12, 2021. A visitation with family will be held from 4:00-6:00 pm, Wednesday, December 15th, at the Cozine Life Events Center, 11500 E. 21st St. N. A funeral service will be held at 2:00 pm, Thursday, December 16th, at Eastminster Presbyterian Church, 1958 N. Webb Rd.

Scott was born in Wichita, Kansas on November 14, 1932 to Andrew and Ruth Ritchie. He graduated from Wichita East High School in 1950. He attended the University of Kansas, graduating with a Bachelor's degree in Geology in 1954. He married Carol L. Swanson on June 19, 1954 and enlisted in the U.S. Air Force, where he served from 1954-1957, attaining the rank of Captain.



Scott had a number of business interests including Chairman of Ritchie Exploration, Inc., Chairman of the Board of Hallrich, Inc. – a Pizza Hut franchise in NE Ohio and West Virginia, Owner and Chairman of Lubbock Feeders, LP – a custom cattle feedlot in Lubbock, TX, and Owner and President of Highland Ranch Company in Olpe, KS.

He was very involved in the community as a member of the Wichita Chamber of Commerce, Wichita Art Museum board member, Wichita Community Foundation, Wichita-KU School of Medicine board member, Tallgrass Ranchers founding member, and Phi Delta Theta Educational Foundation, where he was a trustee and chairman of the finance committee.

Scott served as a past president of the Kansas Independent Oil and Gas Association (KIOGA), past national chairman of the Society of Independent Professional Earth Scientist (SIPES), a member of the KU Geological Associates Advisory Board and he was an Emeritus Trustee of the KU Endowment Board. He served on the steering committee of KU First, and was a member and past board chairman of IPHFHA.

Scott received the Erasmus Haworth Distinguished Alumni Honors in Geology in 1992 and the Fred Ellsworth Medallion in 2005, both distinguished University of Kansas awards. His hobbies included bird and deer hunting, fishing, and traveling.

He is survived by his wife of 67 years, Carol Ritchie; sons, Scott and Tom; daughter, Ann Logan; 10 grandchildren and 5 great-grandchildren.

In lieu of flowers, the family asks that donations be made to either the Phi Delta Theta Foundation, 2 South Campus Avenue, Oxford, OH 45056-1801. (Please include "A. Scott Ritchie" on the memo line) or the Ritchie Hydrogeology Fund at the University of Kansas. Please make checks payable to "Ritchie Hydrogeology Fund" and address them to: KU Endowment, ATTN: Memorial Gift Processing/A. Scott Ritchie, P.O. Box 928, Lawrence, KS 66044.

Memorial

James R. “Jim” Daniels

James “Jim” R. Daniels, the only child of the late James “Jimmy” I. and Helen Daniels, passed away peacefully on November 23, 2021. Jim will be remembered by those he touched as a man dedicated to his family, work, and community. Although known by some of his life as “little Jimmy”, in his later years he was known by his children, grandchildren, and great-grandchildren as Pops. Jim was born August 21, 1928, in Ponca City, Oklahoma where his father, a geologist, worked in oil fields located in Texas, Oklahoma, and Kansas. In 1936 the family moved to Wichita where Jim would spend the rest of his life. He graduated from East High School in 1946 and followed his father’s path by obtaining a Professional Degree in Geological Engineering from the Colorado School of Mines in 1951. Soon after graduation Jim became a Lieutenant with the Army Corp of Engineers working on the construction of air bases in Arizona and California.

After his discharge in 1953, Jim worked with his father in Wichita for several years as a consulting geologist until starting D & D Drilling with Glen Dunne in 1961. The two men had some success but sold the company in 1967. Jim was then hired by Murfin Drilling Company as General Manager to oversee an expansion of Murfin’s exploration activities. Jim spent the remainder of his working life with Murfin, and despite the inevitable ups and downs of the oil business, Jim and Murfin prospered. Jim was inducted into the Kansas Oilman’s Hall of Fame in 2005 and was pleased to be introduced by his son Bob, also a geologist. Although Jim claimed to retire on several occasions, he always showed back up at work. Murfin was always kind enough to provide him office space. Jim truly loved working as a geologist and made sure his children had more than a basic understanding of geology. On almost every family trip Jim would stop the car at an interesting rock formation and give his children an impromptu lecture on its history.

On November 26, 1955, Jim married Patricia “Pat” Phillips and they remained happily married for over 40 years until Pat’s death on August 16, 2001. Jim was a great lover of the outdoors and was an avid fisherman and quail hunter. Family trips often involved driving to Colorado for skiing in the winter and to Minnesota in the summer for water skiing and fishing. Jim taught Pat how to fly fish and would take trips to fish some of the great trout rivers in Wyoming, Montana, Idaho, and Colorado. He loved to travel by car. For example, he thought it a great adventure when he and Pat drove around the entirety of Lake Michigan.

On December 17, 2005, Jim married his second wife, Lois Tully Gerber. The two of them continued to pursue his love of family and car travel. They had numerous adventures across the US. As he slowed down the trips became fewer, but they enjoyed their home life together.

Jim is survived by his loving wife, Lois Daniels; his five children, Kathleen (Gregg) Teel of Overland Park, KS, Bob Daniels & Carolann Alexander of The Woodlands, TX, Mike (Janet) Daniels of Scottsdale, AZ, Tim (Lori) Daniels of Dallas, TX, Colleen O’Callaghan of Wichita, KS; thirteen grandchildren; twelve great-grandchildren with another on the way; and Lois’ numerous children, grandchildren, and great-grandchildren.

All will cherish their memories of time spent with Jim and mourn his death.

Jim was always committed to helping his community. Any donations in his name to The Center of Hope or Catholic Charities would be appreciated. He also was a strong believer in donating blood and did so himself on a regular basis for most of his life. A monetary donation or a donation of blood to the American Red Cross would also be welcomed and would honor Jim’s legacy.

In conversation with current KGS president, Brian Fisher, he asked that I place an announcement for any KGS members that seek wellsite geologic work to send their names and info to me at:

manager@kgslibrary.com

If calls come in to the KGS seeking a consulting geologist, names will be given on a rotating basis through Rhonda.

Preference will be given to geologists who have professional ads in the KGS Bulletin.

Please be advised, that the KGS has not had calls, of this nature, for many years. Brian did, however, want interested parties to be in line for such work.

The Following Are For Sale

Kansas Completion Cards:

Several sets (call for more information)

Oklahoma Completion Cards

New Mexico Completion Cards

North Dakota Completion Cards

Utah Completion Cards

Microfiche Electric Logs

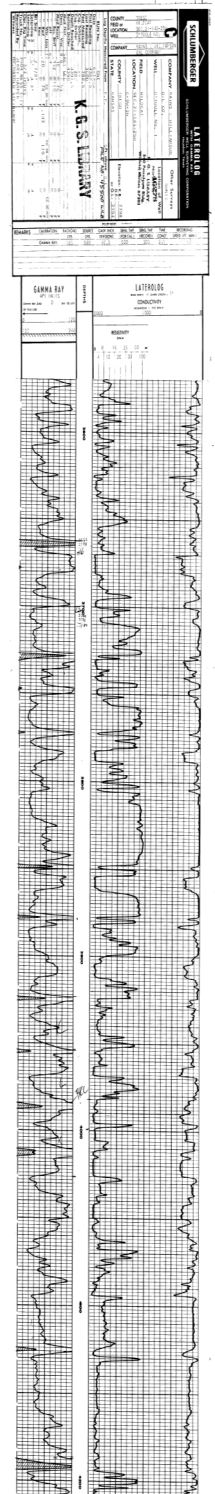
Kansas Oklahoma Texas

Geological Office Furniture:

- 8-drawer completion card cabinets
- 7-drawer cabinets
- Map cabinets—metal—2 available
- Map racks—different sizes

Call: 316-265-8676 Ask for Ted

*The KGS Library is pleased to
announce a new service*



Creating
LAS files
from our logs
or yours

**\$20.00 per
curve!!**

Quick
turn-around

Send us your log file
or tell us which of
ours you would like
converted.

316-265-8676

EMERGENCY NOTICE

ATTENTION TO ALL LOCAL AREA KGS MEMBERS

The KGS Library plans to move to a new building by the end of March 2022. OK Transfer and Storage will handle all of the heavy lifting and moving of our files, furniture and equipment. However, there are several projects that need to be finished ahead of the move. These projects consist of organizing our data, moving files etc. from the basement for recycling or disposal, and any other needs our move director, Tyler Sanders, deems warranted. The KGS needs volunteers for all of this massive undertaking. Please contact Tyler at 316-807-0197 or thsanders7@gmail.com One can also contact Wes Hansen at the KGS Library 265-8676.

A shout out to Kansas Oil and Gas Industry

Service Companies

**Oil prices are recovering nicely with WTI over \$80 per barrel
and Kansas posted price over \$70 per barrel**

Now is the time to resume advertising in the KGS Bulletin

**Let our several hundred members know that your company is
still active and ready to work.**

Your half page ad would look great here.

Color or blank and white

Contact Kent Scribner at 316-640-1154

2022 KGS Board of Directors



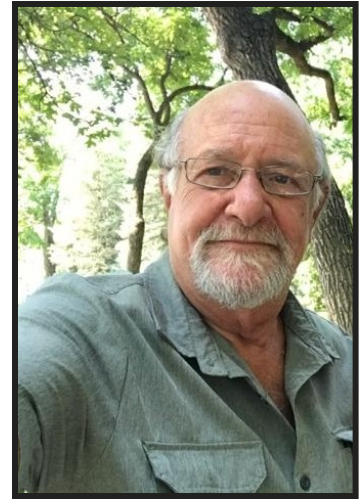
Roger Martin
President



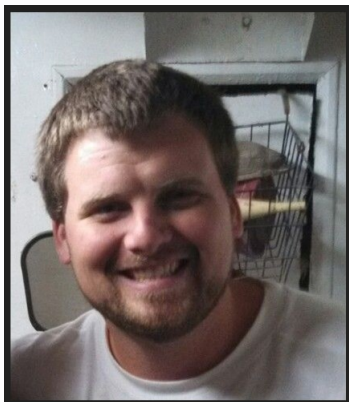
Preston Doll
VP-President Elect



Garet Dinkel
Treasurer



Sal Mazzullo
Secretary



Seth Evenson
Director



Brian Fisher
Director



Doug Louis
Director

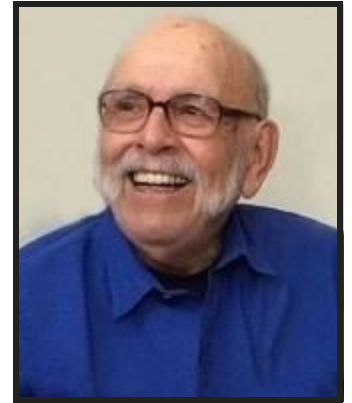
Doug Louis was selected by the KGS Board to serve out the 2022 term of Preston Doll as director. Preston Doll submitted his resignation as director for the 2022 calendar year. A big thanks from the nominating committee for these members willing to serve our society.

Memorial

James "Jim" Iniguez

October 12, 1931 - December 31, 2021

Wichita, Kansas - Age 90, passed away on Dec. 31, 2021. He was born Oct. 12, 1931 to Jose and Refugio Iniguez in Wichita, KS. Jim proudly served in the U.S. Navy and was a loving Husband, father, grandfather, great-grandfather and friend who will be dearly missed by many. Jim graduated from North High School and furthered his education at WSU. He was a Geologist / Draftsman for various oil companies as well as being self-employed. Jim's passions were his family, golf, reading and being an inventor / innovator. He was preceded in death by his parents and siblings, Luis Alfredo Iniguez, Irene Solorzano, Alice Luna, Joe Iniguez and Javier Iniguez. Jim is survived by his devoted wife, Juanita Iniguez; sons, Marcus (Annette) Iniguez and Ramon (Sue) Iniguez; grandchildren, Darius (Aivy) Iniguez, Aja (Dustin) Howerton and Morgan Durham-Iniguez; great-grandchildren, Rowan Iniguez, Cambria Iniguez, Evangeline Howerton, Beckett Howerton and Stellan Howerton; and numerous cousins, nephews and nieces in Kansas, Colorado and Guadalajara Mexico. A Rosary will be 6:00pm, Sun., Jan. 9th, with Mass of Christian Burial being held 11:00am, Mon., Jan. 10th, both at St. Jude Catholic Church, 3030 N. Amidon Ave, Wichita, KS 67204. Interment following the service at Calvary Cemetery, 610 S. Vassar St, Wichita, KS 67218. Memorials can be made to St. Jude Children's Research Hospital and/or Catholic Charities Wichita.



Lee Poulsen

November 20, 1922 - January 19, 2022

Oklahoma City, Oklahoma - Walter Lee Poulsen "Lee" was blessed with a long and full lifetime. Following his service in the US Air Force during WWII, he graduated from Kansas State University with a degree in geology. He then went on to have a successful career as an independent petroleum geologist and was well respected in the oil industry in and around Wichita, KS. After retiring to the Coves at Grand Lake, OK, Lee learned to make useful wooden objects – furniture and birdhouses, and tried valiantly to maintain a disappointing vegetable garden. Many folks think Lee was dabbling in magic due to his ability to turn his outrageously awful golf swing into respectable scores. Lee leaves behind a sizable fan club including: Carolee, his wife of a very very very long time; four children: Marsha, Kristen, David and Julie and several grand and great-grandchildren - who are all above average; as well as many friends and admirers. No memorial service will be held. Memorial donations may be made to Kansas Geology Society, 212 N Market, Suite 100, Wichita KS 67202.



In Memoriam

KGS and Industry Members Lost in 2021 and 2022

2021

Lee Banks

Richard “Dick” Smith

Timothy J. Lauer

Walter Innes Phillips

George N. Mueller

Jack W. Gabbert

Fred Stump

Larry J. Richardson

James R. Daniels

A. Scott Ritchie

James “Jim” Iniguez

2022

Lee Poulsen

Attention:

The KGF has several empty completion card cabinets for sale.

The price is \$50/cabinet with buyer responsible for pick up.

Also, many empty file cabinets and desks etc. are available as well.

Please contact Ted Jochems or Tyler Sanders through

the KGS at 316-265-8676

PROFESSIONAL DIRECTORY

Kirk Rundle
Consulting Geophysicist

3D Seismic Design, Acquisition to Processing QC.,
Interpretation and Analysis, Subsurface Integration
7340 W. 21st. N., Ste. 100
Wichita, Kansas 67205

Office: 316-721-1421 Fax: 316-721-1843
Email: kirk@rundlegeo.com

ROGER L. MARTIN
Independent Petroleum Geologist

200 E 1st St, Ste 405, Wichita, KS 67202

Cell: 316-833-2722 Office: 316-250-6970
KS Field Cell: 316-655-1227

Email: rogermartingeo@yahoo.com

Covey - The Well Watchers

“One Thousand Wells and Counting”

Curtis E. Covey Wellsite Petroleum Geologist

Gas Trailer Cell: 316-217-4679 Office: 316-776-0367

Email: wellsitigeol@gmail.com

6548 Bedford Circle Derby, Kansas 67037

Gas Detection Trailer & Internet/Phone Communications



ELI J. FELTS
CONSULTING PETROLEUM GEOLOGIST

316.204.5059 EJJELTS47@GMAIL.COM

- VERTICAL & HORIZONTAL WELL-SITE SUPERVISION
- PROSPECT GENERATION & EVALUATION
- WELL-LOG ANALYSIS
- DIGITAL MAPPING SERVICES & GEOLOGICAL REPORTS
- KCC & COMPLIANCE SPECIALIST
- PROFESSIONALLY INSURED

COMPETITIVE PRICING & STATE OF THE ART SERVICES YOU CAN COUNT ON
CALL TODAY & RECEIVE (1) FREE DAY WELL-SITE TO NEW CLIENTS

Your business card ad

Could be right here

For only \$90/year

M. ((Brad))ford Rine, Geologist

Licensed, Registered, Certified

PROSPECT EVALUATION	PROSPECT ORIENTATION
WELLSITE SUPERVISION	DRLG/COMPL CONSULTATION
RESERVOIR STUDIES	PROPERTY EVALUATION
EXPERT TESTIMONY	BANJO PICKER
100 South Main Suite #415 Wichita, Kansas 67202	Email: rinemb@sbcglobal.net Office & Cell: (316) 250-5941

WESLEY D. HANSEN

Consulting Geologist

Well site Supervision • Geologic Studies

212 N. Market, Ste 257

Wichita, Kansas 67202

Office/Mobile: (316) 772-6188

whansen4651@sbcglobal.net

40 Continuous Years in the Oil Patch

Your business card ad

Could be right here

For only \$90/year

IOGSI INDEPENDENT
OIL & GAS SERVICE, INC.
Digital Well Data You Can Trust

JOHN H. MORRISON, III
President

www.IOGsi.com Phone: 316-263-8281
3909 N. Sweet Bay St. Fax: 316-263-0874
Wichita, Kansas 67226-3501 Email: jmorrison@iogsi.com

MELLAND ENGINEERING, INC.

Petroleum Engineering & Geological Consulting

James E. Melland, P.E., P.G.

President

Office: (620) 241-4621 Fax: (620) 241-2621

jamesm@mellandengineering.com

www.mellandengineering.com

P.O. Box 841, McPherson, KS 67460-0841

Your business card ad

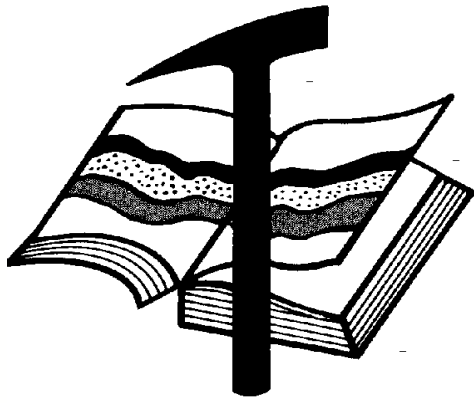
Could be right here

For only \$90/year

Your business card ad

Could be right here

For only \$90/year



Kansas Geological Foundation

Web Site: www.kgfoundation.org

**212 North Market
Wichita, Kansas 67202**

A not-for-profit educational and scientific corporation

GOALS:

- promote geology and earth science
- preserve geological records
- establish memorials and endowments
- support field trips and seminars
- financial aid and grants to students

PLEASE HELP SUPPORT THE FOUNDATION

Kansas Geological Foundation Services

The Kansas Geological Foundation provides the following services as a part of the organization's commitment to educate the public regarding earth science.

Speaker's Bureau

A list of speakers available to talk about various aspects of geology may be obtained by contacting Wes Hansen at the KGS Library, 265-8676. This service is free to the public.

DVD/Videotape Library

The KGF maintains a DVD & videotape library focused primarily on the various fields of earth science. These tapes may be checked out without charge by the public. To obtain a list of tapes, please contact the KGS Library, 212 N. Market, Ste. 100, Wichita, KS 67202, or call Wes Hansen at 265-8676.

The Kansas Geological Foundation was founded in March, 1989 as a not-for-profit corporation under the guidelines of section 501(c)(3) of the tax code to provide individuals and corporations the opportunity to further the science of geology. It is dedicated to providing charitable, scientific, literary and educational opportunities in the field of geology for the professional geologist as well as the general public.

KGF can receive in-kind donations through which the donor may receive a tax deduction. Of equal importance, the KGF provides the financial resources to sort, process and file this data at the KGS library. If you have a donation to make, please contact the KGF at 265-8676.

Your tax-deductible membership donation helps to defray the cost of processing donations and to support public education programs about the science of geology. Annual membership begins at \$50.00 per year. Donations of \$100.00 or more are encouraged through the following clubs:

Century Club	\$ 100 to \$ 499
\$500 Club	\$ 500 to \$ 999
Millennium Club	\$1000 to \$5000
President's Club	\$5000 and over

Kansas Geological Foundation

Kansas Geological Foundation News

Spring 2022 KGF Scholarship Recipients

Name	University	Scholarship	Amount
Hannah Proffitt	University of Kansas	KGF Scholarship - (Knighton Family Scholarship)	\$1000
Greg Seitter	University of Kansas	KGF Scholarship	\$500
Brady Tumblin	University of Kansas	KGF Scholarship	\$500
Daniel Mongovin	University of Kansas	KGF Scholarship	\$500
Isaac Allred	University of Kansas	KGF Scholarship	\$500
Shawn Dunaway	University of Kansas	KGF Scholarship	\$500
Oluwaseun Akomolafe	Kansas State University	KGF Scholarship	\$500
Tolulope Agbaje	Kansas State University	KGF Scholarship	\$500

KGF Grants

\$1000 to Vidhesh Shukla

Graduate Student from Kansas State University



Kansas Geological Foundation News

Students: The KGF awards scholarships each December and May. Check with your department chairs for applications. You must submit complete applications by the deadline.

Scholarship Applications for the Spring semester will be due by December 1, 2021.

Grants to help with research on Kansas related geology are also considered for aid.

If you are in the KGS Library and see Ted Jochems or any of the integrators, give any of them a great big thanks for their efforts in continuing the tedious process of examining, scanning and integrating new logs and geologist's reports etc. into our library and the WDL.

KGF Officers and Board Members

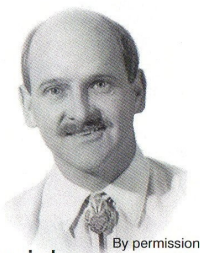
Executive Director **Kerry Parham**
President - **Rusty Mourning**
Vice President - **Will Darrah**
Treasurer - **Mark Thompson**
Secretary - **Debra D. FitzGerald**

Board Members

Ryan Dixon **Brad Rine**
Dennis Hedke **Mark Galyon**
Tim Hellman

Scholarships - Maurice Korphage
Publicity - Wes Hansen

The Kansas Geological Foundation Needs You!



By permission

The KGF provides the financial resources to sort, process and file, in-kind donations of geological data at the KGS library. Due in large part to the KGF this unique and rare well of information is being made available to all. Please consider telling your company management and colleagues about the benefits of a library that continues expanding in part because of the KGF.

We very much value and need your financial support.

Integration Update as of May 31, 2021

From January 1 through June 30, 2021, a total of 19,323 documents were examined by the integrators. A total of 3300 new documents were added to the WDL along with 1992 rescanned documents to replace poor images. This represents a 17.08% increase to the WDL.

PLEASE SUPPORT THE INTEGRATION PROJECT BY DONATING FINANCIALLY TO THE KANSAS GEOLOGICAL FOUNDATION

Submitted by Ted Jochems

Thank you to the Current KGF Members

The Kansas Geological Foundation gratefully acknowledges the generous contributions from the following Individual and Corporate Donors during our yearend 2020 fundraising. From the Basic Membership up through the Millennium Class Members, we are deeply appreciative of your generosity in one of the most challenging times in our history. We wish you every success in the years and decades ahead.

Millennium Club

Steve Frankamp

Don Beauchamp
Paragon Geophysical Services, Inc.
John O. Farmer, Inc.
Gore Oil Company
Hedke Geoscience Consulting, LLC
Derry Larson

Richard Jordan

Roger McCoy
Herman L. Loeb LLC
K & N Petroleum, Inc.
Bob O'Dell
Tom Pronold
Larry Richardson

Murfin Drilling Company, Inc.

Kirk Rundle Consulting, LLC
William H. Shepherd
Northern Lights Oil Company
Shakespeare Oil Company, Inc
Berexco, LLC

500 Club

Century Club

C.W. Todd Aikins III
Val Energy, Inc.
Tomco Oil, Inc.
Holly Burke
Dave Callewaert
Scott Corsair
Marshall Crouch III
James Daniels
Jene C. Darmstetter
Red Oak Energy, Inc
Dixon Operating Co., LLC
David Doyel

W. Bryce Bidleman
Debra FitzGerald
Larry Friend
Wes Hansen
Alfred James III
George R. Jones
Kenneth M. LeBlanc
Chellie Mazzullo
RJM Company
Terra Firma Exploration
Bill Petersen

Sunrise Oilfield Supply, LLC
M. Brad Rine
A. Scott Ritchie
Michel Runnion
Richard J. Saenger
Mark Shreve
Trilobite Testing, Inc.
Richard D. Smith†
Chris Steincamp
Fred Stump
Darrel G. Walters

Basic Membership

Phil Askey
Briscoe Petroleum LLC
Raul Brito
Dean Britting
William E. Chew
Kent Crisler
Alan DeGood
Martin Dubois
Sarlan Resources Inc.
Doug Frickey
Harvey Gough
Tim Hellman

F. Judson Hipps
Jerry Honas
Ronald L. Irion
Ted Jochems
Mike Kidwell
Steve Kirkwood
M.L. Korphage
Larson Engineering, Inc.
William C. Manthey III
Mikeal Maune
Sal Mazzullo
Jon F. Messenger

Rusty Mourning
Quincy Ridge Petroleum, Inc.
Troy Phillips
John Rose
Bob Schreiber
Stewart Producers, Inc.
Robert Stolzle
Mark Thompson
John Washburn
Midco Exploration
JRZ Enterprises, LLC
Brian Fisher

Kansas Geological Foundation Memorials

KGS Member	Date Deceased	Memorial Established
Dan Bowles	09/89	1990
John Brewer	10/89	1990
George Bruce	08/89	1990
Robert Gebhart	01/90	1990
Ray Anderson, Jr.	11/90	1990
Harold McNeil	03/91	1991
Millard W. Smith	08/91	1991
Clinton Engstrand	09/91	1991
M.F. "Ted" Bear	10/91	1991
James & Kathryn Gould	11/91	1991
E. Gail Carpenter	06/91	1993
Benton Brooks	09/92	1992
Robert C. Armstrong	01/93	1993
Nancy Lorenz	02/93	1993
Norman R. Stewart	07/93	1993
Robert W. Watchous	12/93	1993
J. George Klein	07/94	1994
Harold C.J. Terhune	01/95	1995
Carl Todd	01/95	1995
Don R. Pate	03/95	1995
R. James Gear	05/95	1995
Vernon Hess	06/95	1995
E. K. Edmiston	06/95	1995
Jack Rine	07/95	1995
Lee Cornell	08/95	1995
John Graves	10/95	1995
Wilson Rains	10/95	1995
Heber Beardmore, Jr.	09/96	1996
Elmer "Lucky" Opfer	12/96	1996
Raymond M. Goodin	01/97	1997
Donald F. Moore	10/92	1997
Gerald J. Kathol	03/97	1997
James D. Davies	08/88	1997
R. Kenneth Smith	04/97	1997
Robert L. Dilts	05/97	1997
Delmer L. Powers	06/72	1997
Gene Falkowski	11/97	1997
Arthur (Bill) Jacques	01/98	1998
Bus Woods	01/98	1998
Frank M. Brooks	03/98	1998
Robert F. Walters	04/98	1998
Stephen Powell	04/98	1998
Deane Jirrels	05/98	1998
William G. Iversen	07/98	1998
Ann E. Watchous	08/98	1998
W.R. "Bill" Murfin	09/98	1998
Donald L. Hellar	11/98	1998
Joseph E. Rakaskas	01/99	1999
Charles W. Steincamp	02/99	1999
Robert and Betty Glover	10/96	1998
Howard E. Schwerdtfeger	11/98	1999
W. W. "Brick" Wakefield	03/99	1999
V. Richard Hoover	01/00	2000
Warren E. Tomlinson	01/00	2000
James A. Morris	01/00	2000
Eric H. Jager	03/00	2000
Kenneth W. Johnson	03/00	2000

Kansas Geological Foundation Memorials

KGS Member	Date Deceased	Memorial Established
Dean C. Schaaake	03/00	2000
Fred S. Lillibridge	05/00	2000
Jerry A. Langrehr	07/00	2000
Clark A. Roach	07/00	2000
Floyd W. "Bud" Mallonee	10/00	2000
Ralph W. Ruuwe	09/00	2000
Robert L. Slamal	02/01	2001
Jerold E. Jespersen	06/01	2001
William A. Sladek	06/01	2001
Harlan B. Dixon	06/01	2001
Edward B. Donnelly	08/01	2001
Richard P. Nixon	02/02	2002
Robert W. Frensley	12/01	2002
Gerald W. Zorger	01/02	2002
Don L. Calvin	03/02	2002
Claud Sheats	02/02	2002
Merle Britting	2002	2002
Harold Trapp	11/02	2002
Donald M. Brown	11/02	2003
Elwyn Nagel	03/03	2003
Robert Noll	09/03	2003
Benny Singleton	09/03	2003
Jay Dirks	2003	2003
J. Mark Richardson	02/04	2004
John "Jack" Barwick	02/01	2004
Richard Roby	03/04	2004
Ruth Bell Steinberg	2004	2004
Gordon Keen	03/04	2004
Lloyd Tarrant	05/04	2004
Robert J. "Rob" Dietterich	08/96	2004
Mervyn Mace	12/04	2004
Donald Hoy Smith	04/05	2005
Richard M. Foley	06/05	2005
Wayne Brinegar	06/05	2005
Charles B. Moore	09/96	2005
Jack Heathman	05/06	2006
Charles Kaiser	09/06	2006
Rod Sweetman	08/06	2006
Karl Becker	10/06	2006
Frank Hamlin	10/06	2006
Marvin Douglas	12/06	2006
Robert W. Hammond	04/07	2007
Eldon Frazey	04/07	2007
Pete Amstutz	05/07	2007
Charles Spradlin	05/07	2007
Donald R. "Bob" Douglass	09/07	2007
Vincent Hiebsch	11/07	2007
Glen C. Thrasher	03/08	2008
Peg Walters	06/08	2008
Theodore "Ted" Sandberg	07/08	2008
James Ralstin	11/08	2008
Earl Brandt	04/09	2009
Walter DeLozier	05/09	2009
Don D. Strong	1/10	2010
John Stone	02/10	2010
Craig Caulk	03/10	2010
Joseph E. Moreland, Jr.	03/10	2010

Kansas Geological Foundation Memorials

KGS Member	Date Deceased	Memorial Established
Gene Garmon	03/10	2010
James F. Dilts	05/10	2010
Jerry Pike	05/10	2010
Donald Hollar	06/10	2010
Delbert Costa	08/10	2010
John Tanner	08/10	2010
William (Bill) Owen	09/10	2010
Harold (Hal) Brown	10/10	2010
Edmund G. Lorenz	11/10	2010
Thomas E. Black	05/11	2011
Wayne E. Walcher	07/11	2011
Henry F. Filson	07/11	2011
Thomas Ray	07/11	2011
Edgar E. Smith	09/11	2012
Marilyn Messinger	06/13	2013
Micheal Mitchell	09/13	2013
Orvie Howell	11/13	2013
James Thompson	11/13	2013
Dick Rowland	09/13	2014
Robbie Thompson	12/13	2014
Kris Kennedy	04/14	2015
Annette Hedke	02/15	2015
James Devlin	04/15	2015
Robert Gensch	09/15	2015
Jerald Rains	05/16	2016
Max Houston	05/16	2016
Robert "Gus" Messinger	01/17	2017
Jimmy Wayne Gowens	04/17	2017
Walter H. Martz Jr.	01/18	2018
Gary Sandlin	01/17	2018
Douglas McGinness	12/16	2018
Allen Siemens	06/18	2018
Ernest R. "Ernie" Morrison	09/18	2018
E. G. "Elbie" McNeil	12/18	2018
Robert Maxwell (Bob) Euwer	1/19	2019
J. Fred Hambright	12/18	2019
W. Lynn Watney	7/19	2019
Byron Hummon	12/18	2019
Mike Raymond	11/19	2019
James Roberts, Jr.	3/19	2019
Herb Johnson	8/19	2020
Lloyd Parrish	2/20	2020
Bruce Reed	5/20	2020
Bob Scull	6/20	2020
Thornton E. Anderson	7/20	2020
Don Shawver	12/16	2020
Phillip Hart	12/20	2021
Timothy Lauer	05/21	2021
Fredrick Stump	09/21	2021
Larry J. Richardson	10/21	2021



18 Drilling Rigs
To depth of 9,500 ft.



WESTERN KANSAS
SOUTHERN NEBRASKA
EASTERN COLORADO
OKLAHOMA PANHANDLE

For contract information contact:

William Murfin
Drilling Manager

316-258-8888 (Direct)
316-267-3241 (Main)

250 N. Water, Ste. 300
Wichita, KS 67202

DUKE
DRILLING COMPANY

ROTARY DRILLING CONTRACTOR

620 Hubbard PO Box 823
Great Bend, KS 67530

100 S. Main, Ste. 410,
Wichita, KS 67202

Your Company

BULLETIN CONTENT POLICY

Effective January 1, 2018, only ads for service companies and geologists offering their services will be permitted in the KGS Bulletin. Furthermore, only content of geologic interest or official KGS functions (technical talks, annual banquet, golf tourney, picnic etc.) will be permitted in this bulletin. This policy is in keeping with maintaining a professional standard for this publication. Any interpretation of this policy rests solely with the editor of this bulletin.



AAPG Needs You!

Professional geoscientists, share your world!

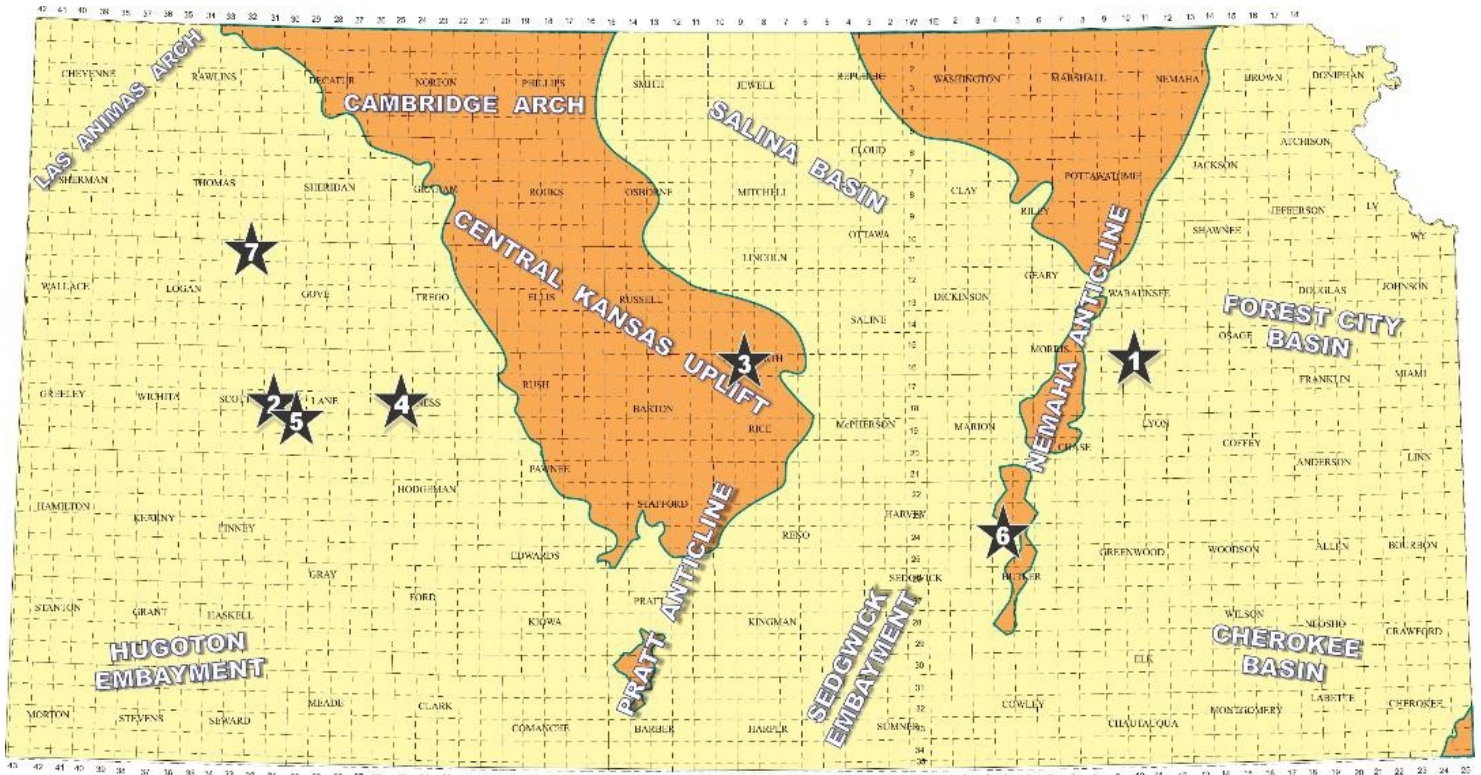
The Mid Continent Section has **17 AAPG Student Chapters**, but only **3 Visiting Geoscientists**...which makes it almost impossible to have a professional geoscientist visit to each school at least once a year or even once every two years. The aim of AAPG's program is to give students a flavor of a professional life in energy resources. It also hopes to encourage dialog between industry and academia. To be a Visiting Geoscientist bearing the AAPG flag, you are asked to have at least 5 years of experience and make at least one visit per year to a university. It can be a school with an AAPG Student Chapter, or a college/university without one. Your choice.

The Mid Continent schools with Student Chapters are: Missouri University, Fort Hays State University, Iowa State University, Kansas State University, Missouri State University, University of Nebraska, Northwest Missouri State University, Oklahoma State University, University of Oklahoma, University of Arkansas, University of Iowa, University of Kansas, University of Missouri, Columbia University of Tulsa and Wichita State University.

Contact Robbie Gries, co-Chair VGP committee, Denver, if you are interested in learning more. rrgries@aol.com

Exploration Highlights

By John H. Morrison, III



Map courtesy of Marc Summerville

- 1.) Mull Drilling Company Inc.,** Wichita, KS, has discovered new oil reserves in the Simpson Sand formation at the #1-31 Peterson Trust in Lyon County. The wildcat well establishes the new Rainbow Ridge Northwest field, about two miles south and five miles west of Bushong, Kansas. Operator drilled the well in approximately SE SW NE SW in section 31- T16s- R10E, and is nearly one mile northwest of known production in the Rainbow Ridge field. Lighthouse Drilling bottomed the well at a total depth of 3,200. Completion details are confidential. The Rainbow Ridge field was discovered by John O. Farmer, Inc. in 2018 with the completion of the #1 Finney, NE/4, section 6- T17s- R10E, for 22 BOPD from the Viola formation. (ref: API 15-111-20553)
- 2.) Stelbar Oil Corp.,** Wichita, KS, has completed an infield wildcat discovery located over one-half mile from production in the Keystone field (1951, Lansing-Kansas City, Marmaton oil), and adds new Pleasanton and Cherokee oil pay to the fields resources. The #1-19 Michaelis - Janssen Unit, spotted in approximately SW NW NW NW in section 19- T18s- R31W, is also producing an unknown amount of commingled crude from the Lansing - Kansas City formation. Total depth was obtained at 4,620 ft. by Murfin Drilling tools. Completion details remain confidential. Wellsite lies five and one-half miles east of Scott City in Scott County. (ref: API 15-171-21275)
- 3.) TREK AEC LLC,** Wichita, KS, has discovered Arbuckle oil deposits at the #2 Staats in approximately SW SE NW SE in section 19- T18s- R13W in Ellsworth County. The infield wildcat discovery well located a seismic high on the west side of a faulted area within the Green Garden field (1954, Lansing-Kansas City, Arbuckle, Simpson Oil & Wabaunsee Gas). Operator contracted with Duke Drilling to drill the well to a total depth of 3,330 ft. Completion details are confidential. Field area lies about three miles north of Lorraine, Kansas. (ref: API 15-053-21375)

4.) **Palomino Petroleum, Inc.**, Newton, KS, has successfully stepped slightly over one-half mile northwest of known production in the Dex South field (2003, Cherokee, Mississippian Oil) to drill and complete the #1 The World is not Enough well in Ness County. The well has been recognized as an infield discovery drilled in approximately NE SE SE SE in section 12-T18S- R25W, about three miles north and one mile east of Laird, Kansas. Total depth was obtained at 4,477 ft. Ryan Seib was wellsite geologist. Completion information is confidential. (ref: API 15-135-26118)

5.) **Ritchie Exploration, Inc.**, Wichita, KS, has discovered a new Mississippian oil reservoir with the successful completion of the #1 Stucky - Dirks well, spotted in approximately NE NE NW NE in section 33-T19s-R30W, in Lane County. The new Sutton Township East pool discovery well was drilled to a total depth of 4740 ft. by Murfin Drilling tools, slightly over eight miles southeast of the town of Amy, Kansas. The Stucky-Dirks drill site lies about one and one-quarter miles southeast of another Ritchie pool discovery, the #1 Spece 29-D, SE/4 of section 29, that was completed in January, 2019 for 106 BOPD from the Altamont and Fort Scott limestones. The one-well field has produced over 47,000 bbl. of oil to date. Completion information on the new Stucky - Dirks discovery well is being held confidential at this time. (ref: API 15-101-22657)

6.) **C & G Drilling**, Eureka, KS. has expanded the western boundary of the Plum Grove Northwest field in Cowley County. The #1 Joseph A, spotted in approximately NW SE NE SW in section 14-T24S-R4E, is producing an undisclosed amount of crude oil from the Mississippian formation through perforations shot between 2462 to 2488 ft. Company drilling tools bottomed the well at a total depth of 2588 ft. by loggers measurements. This is C & G Drilling's fourth completed oil well in the field this year. The Plum Grove Northwest field has produced oil from the Mississippian since 1982. (ref: API 15-015-24152)

KGS members please check your files

Fellow KGS members, please remember to check your files of elogs and geologist reports against the KGS paper library and the WDL before discarding them. I was contacted by John Morrison recently about a well I watched years ago that had some tops and DST info missing from his completion card. I took pics from my geo report of tops and DST results and sent them to John to update his card data. If I was to go through all of my files, I'm sure I have many logs and geo reports that are not in the files of either the KGS paper or the WDL. Before I hang things up in my career, I vow to go through all of my data and get it donated and scanned.

KCC rules allow an operator to hold information confidential for a two year period. As long as the well in question is older than the two year period, one can release the data. If one has concerns about alienating a client, of course, feel free to ask for permission.

Wes Hansen

CHANGE SERVICE REQUESTED

KGS BULLETIN
 January - February 2022

January 2022

Sun	Mon	Tue	Wed	Thu	Fri	Sat
						1
2	3 Library Closed New Years	4	5	6	7	8
9	10	11 KGS Board	12	13 Tech Meeting	14	15
16	17	18	19 KGF Board	20	21	22
23	24	25	26 Tech Meeting	27	28	29
30	31					

February 2022

Sun	Mon	Tue	Wed	Thu	Fri	Sat
		1	2	3	4	5
6	7	8 KGS Board	9 Tech Meeting	10	11	12
13	14	15	16 KGF Board	17	18	19
20	21 Library Closed President's Day	22	23 Tech Meeting	24	25	26
27	28					